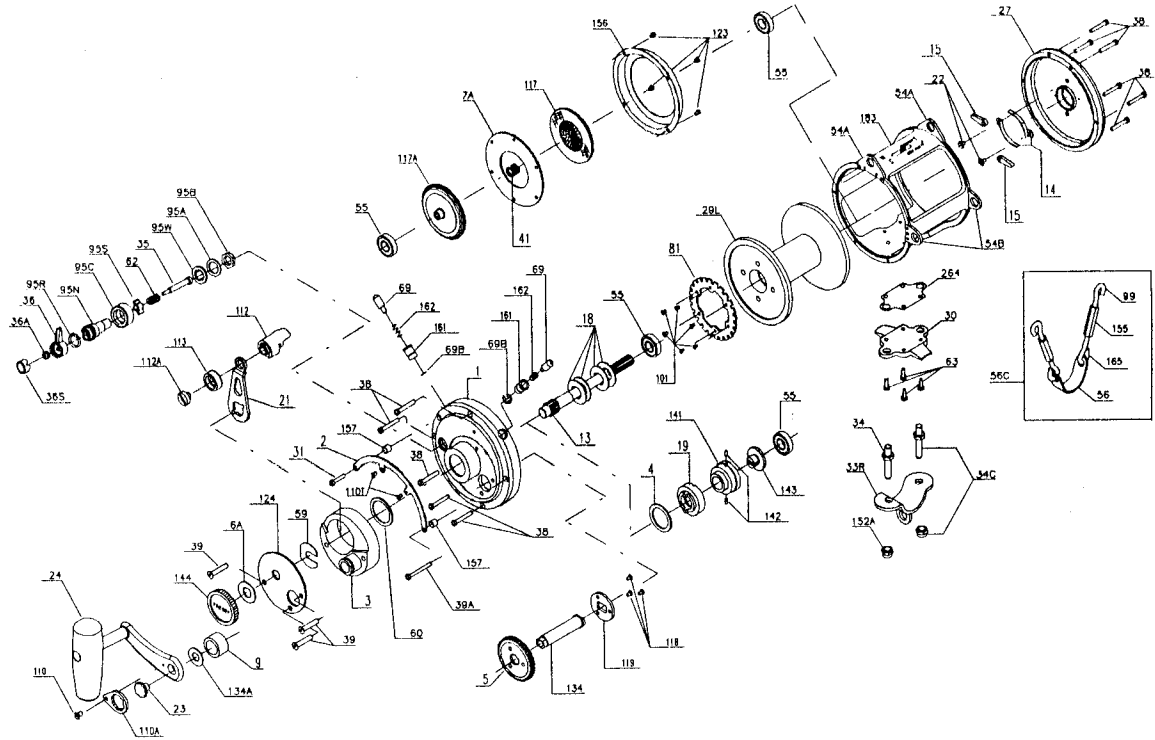




PARTS AND PRICE LIST FOR INTERNATIONAL 80T AND 80TW



Key No.	Part No.	Description	Price	Key No.	Part No.	Description	Price
1	001N080T	Right-Slide Plate Assembly	\$109.50	63	063 030T	Stand Screws (4 req.)	\$.80
2	002 080	Quadrant Ring	8.00	69	069 050	Locating Pins (2 req.)	1.25
3	003 080	Bridge Assembly	23.00	69B	069B050	Retaining Ring (2 req.)	.80
4	004 080	Cam Thrust Washer	1.10	81	081 080S	Ratchet	6.75
5	005 080	Main Gear	15.80	95A	095A020	Click Bushing Washer	.65
6A	006 155	Spacer Washer	.60	95B	038 710	Click Bushing Nut	.50
7A	007A080	Metal Drag Washer	17.50	95C	095C080ST	Click Adjustment Ring	3.00
9	009 080	Sleeve Spacer	1.35	95N	095N080ST	Click Tongue Bushing	5.00
13	013 080	Pinion Gear	41.00	95R	095R080ST	Click O-Ring	.60
	013 080W	Pinion Gear	43.00	95S	095S080ST	Click Spring Slider	1.15
14	014 050	Dog Springs (2 req.)	1.00	95W	095W080ST	Eared Spring Washer	.75
15	015 050	Dogs (2 req.)	.80	99	099 116	Left Hand Hook Screws (2 req.)	1.30
18	018 080W	Disc Clutch Springs (4 req.)	1.55	101	101 030	Ratchet Screws (6 req.)	.45
19	019H080	Eccentric Cam	14.35	110	110 050	Handle Lock Screws	.50
21	021 080	Eccentric Lever	7.75	110A	110A050	Handle Locking Plate	2.40
22	022 109	Dog Spring Screws (2 req.)	.50	110T	110T050	Quadrant Screw (2-Req.)	.50
23	023 080T	Handle Screw	3.50	112	112 050	Eccentric Lever Knob	16.25
24	024 080ST	Handle Complete	37.00	112A	112A050	Eccentric Knob Screw	.90
27	027 080T	L.S. Plate Assembly	102.50	113	113 050	Eccentric Lever Cap	3.95
29L	029L080S	Spool	123.00	117	117D080T	Drive Plate (Outer)	21.00
	029L080SW	Spool	136.00	117A	117A080T	Drive Plate (Inner)	21.00
30	030 080S	Stand	32.50	118	118 080	Coupling Plate Screws (3 req.)	.50
31	031T020	Short Quadrant Screw	.55	119	119 080	Coupling Plate	1.40
33R	033 130ST	Rod Clamp	21.00	123	123 050	Drag Cover Screws (4 req.)	.45
34	034 080T	Clamp Screw (2 req.)	2.25	124	124 080	Bridge Cover	7.05
34C	034C080T	Rod Clamp Screw w/Nut	3.70	*	*125 080	Cam Housing	8.50
35	035080ST	Click Tongue	3.25	134	134N080	Gear Stud	10.00
36	036 080ST	Click Button	7.10	134A	134A080	Gear Stud Washer	1.10
36A	036 700	Click Button Nut	.40	141	141 080	Cam Follower	7.00
36S	036S080ST	Click Button Cap	.80	142	142 080ST	Cam Follower Pins (2 req.)	.60
38	038T050	Frame Screws (11 req.)	.55	143	143 080	Adjusting Screw	4.50
39	039 012	Bridge Cover Screws (3 req.)	.50	144	144 050	Preset Knob	6.95
39A	039 050	Long Quadrant Screw	1.00	152A	152A080T	Rod Clamp Acorn Nuts (2 req.)	1.45
41	041 050	L.S. Bearing Spring	.90	155	155 116	Turnbuckles (2 req.)	1.65
54A	054A080S	Top Harness Lugs (2 req.)	4.15	156	156 080	Drag Cover	6.50
54B	54B-80S	Bottom Harness Lugs (2 req.)	4.15	157	157-50	Quadrant Spacer Bushings (2 req.)	.60
55	055 080	Ball Bearings (4 req.)	17.50	161	161 050	Locating Pin Bushings (2 req.)	1.20
56	056 116	Rod Brace	5.95	162	162 050	Locating Pin Springs (2 req.)	.50
56C	056C116	Rod Brace (Complete)	14.45	165	165 116	Right Hand Hook Screws (2 req.)	1.30
59	059 050	Slotted Washer	.80	183	183 080T	Tube Frame	117.00
60	060 050	Backing Washer	.90		183 080TW	Tube Frame	131.00
62	062 050	Click Spring	.80	264	264 080T	Stand Gasket	1.90